

Southeast Tech
Competency Based Education Report
EXECUTIVE SUMMARY

Purpose:

To provide the School Board an overview of Competency Based Education and to review Southeast Tech's CBE Pilot.

As part of Southeast Tech's TAACCCT grant, a deliverable was created to review Competency Based Education (CBE). CBE has been around for 40 years, and at one time, the majority of Southeast Tech's programs were delivered in a competency based format. In the last three years there has been a dramatic increase of the utilization of CBE and research into the methodology.

Southeast Tech has reviewed an extensive amount of current research and common practices, attended multiple CBE conferences, aligned Southeast Tech staff and teams to research CBE and has developed a pilot math course to be offered in Spring 2016. This course provides students with the same educational outcomes by moving course objectives to course competencies and developing a framework for individualized student completion through mastery of competencies.

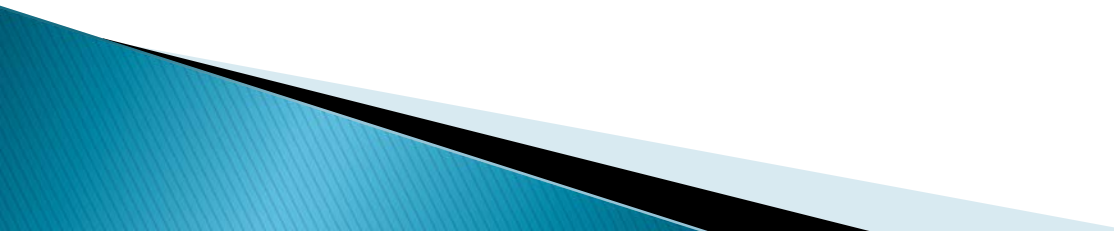
Administrative Recommendation to School Board:

Acknowledge the Competency Based Education Report.

Competency Based Education

Craig Peters, EdD
Southeast Tech Director of Academics

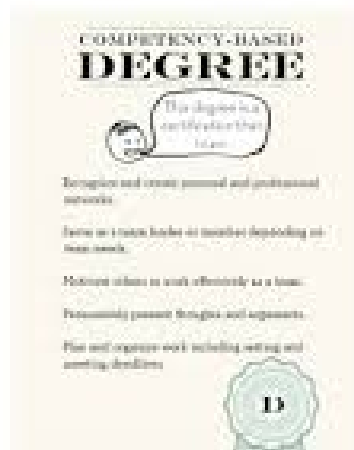
Objectives

- ▶ Review fundamentals of CBE
 - ▶ Lessons learned from TAACCCT Research
 - Go slow, pilot, and start small
 - ▶ Guidelines for moving forward
 - ▶ Discussion of pilot program at Southeast Tech
- 

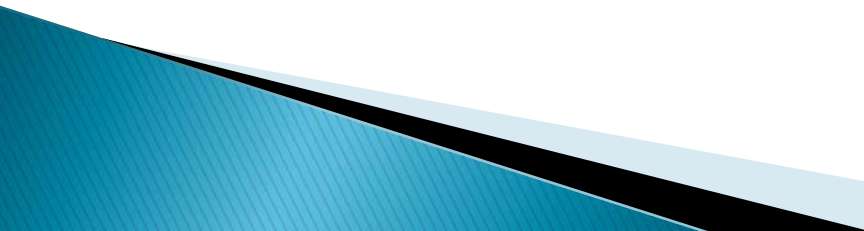
What is Competency Based Ed (CBE)

▶ Department of Ed

- Transition away from seat time
- Structure that creates flexibility
 - Student progresses as they demonstrate and master competencies
 - Regardless of place, time or pace of learning
- Types
 - Course Equivalent
 - Hybrid/Online
 - Direct Assessment



Definitions

- ▶ Competency – a clearly defined and measurable statement of knowledge or skill.
 - ▶ Course Equivalent – A conversion of competencies to an equivalent credit hour.
 - ▶ Direct Assessment – relying solely on the attainment of defined competency or by recognizing the direct assessment of student learning by others.
 - Projects, papers, exams, presentations, performances or portfolios
- 

The Scale of CBE

- ▶ The variance of CBE across the nation is tremendous
 - WGU (Western Governors University), Sinclair CC, etc.
 - Entire CBE programs, online, transcripts based upon competencies, funding models, etc.
 - The majority of the rest of the nation
 - Starting small pilots in CBE, developing competencies, modifying instruction to stay within traditional campus structures

Guideline 1

▶ Research

- Terms, Taxonomies & Foundational Info
- Accreditation & Regulation
- Opportunities, Challenges & Goals
- Mission, Goals & Stakeholders
- Business Systems

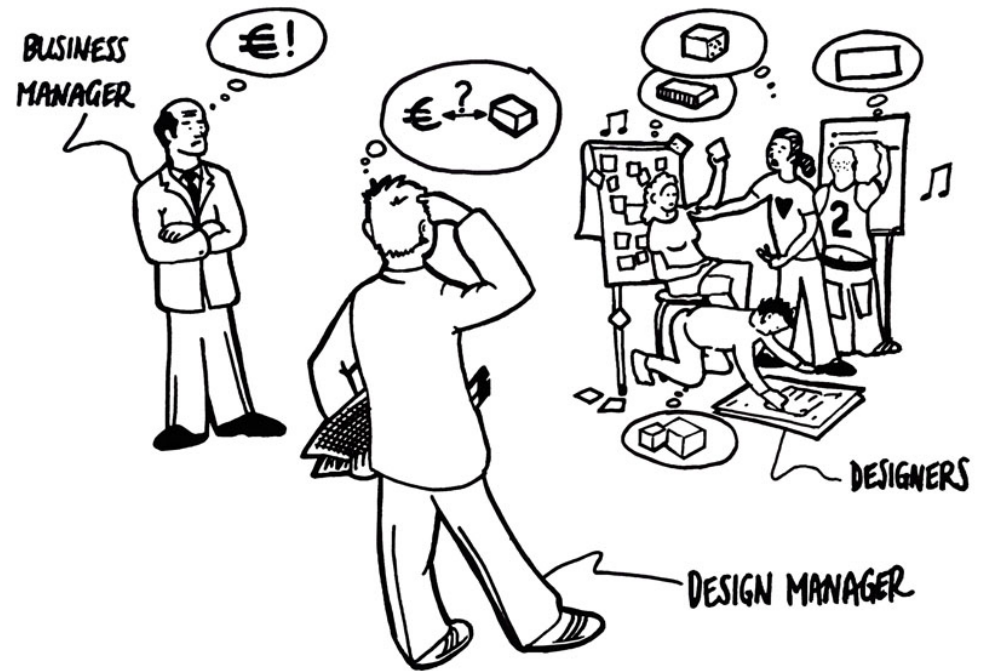


RESEARCH

Guideline 2

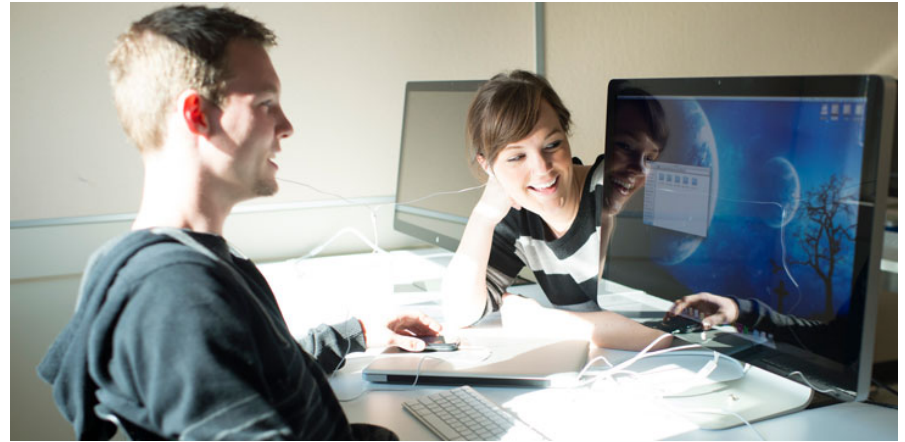
► Design

- Program Development
- Transcripts
- Financial Aid
- Technology Systems



Guideline 3

- ▶ Development
 - Technology & Systems
 - Student Support
 - Communications



Guideline 4

- ▶ Implementation
 - Enrolling students
 - Launching your program



Guideline 5

- ▶ Evaluation
 - Measures & Analytics
 - Data collection
 - Assessing & Improving



CBE Pilot Spring 2016

▶ MATH 115 90C

- Course equivalent for College Math
- Will utilize existing semester framework to not affect financial aid
- 5 units created into modules
 - Approximately 3 weeks per module
 - Faculty member will be present MWF from 10:00 – 10:50 AM
 - Students will be self-paced within the framework of the 3 weeks and the class
 - Competency mastery set at 80%