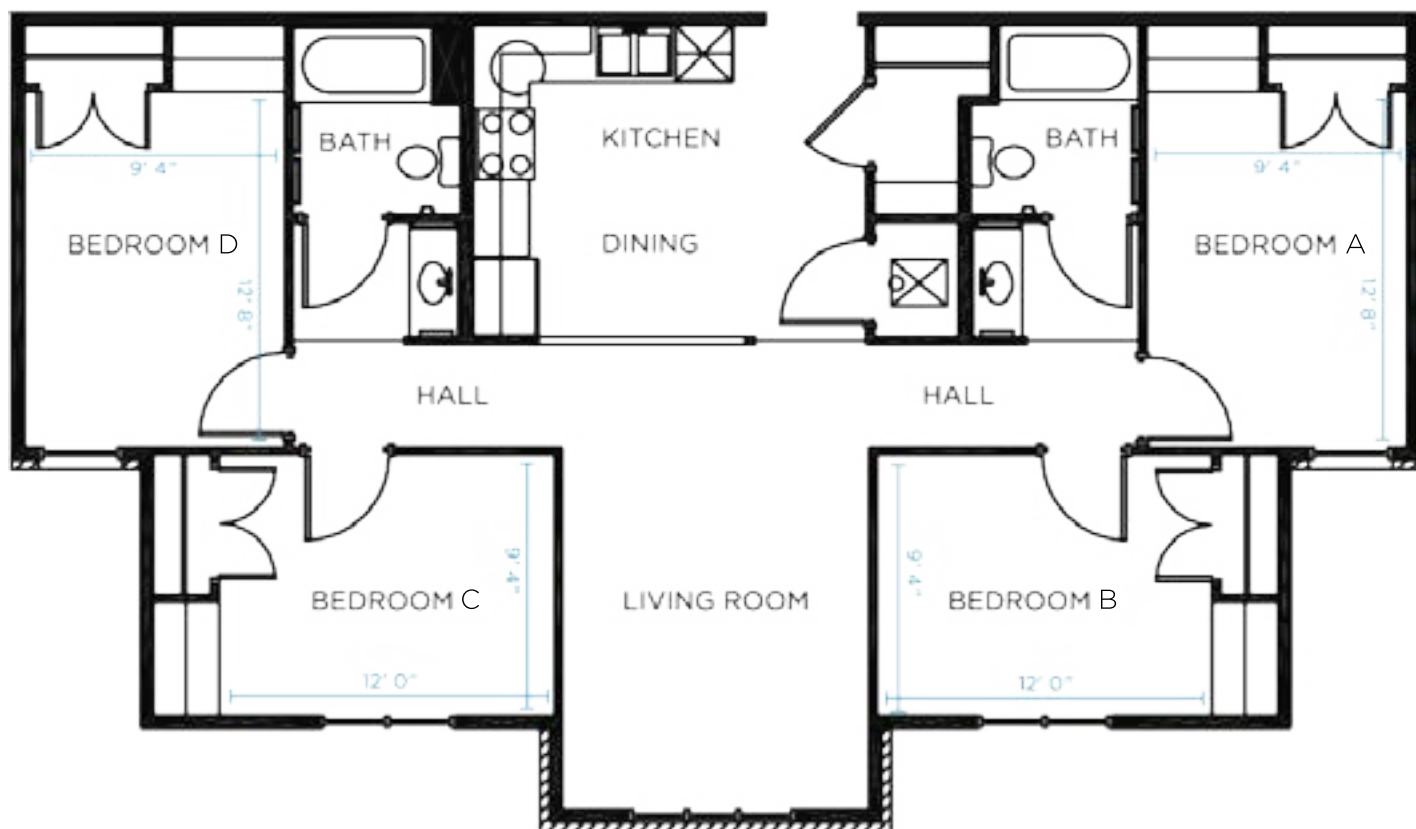


4-BEDROOM LAYOUT



Above is the floor plan for our 4-person apartments. While there are a limited number of 2-person apartments, those spaces are typically reserved for non-traditional students. For questions about the 2-person apartments, please contact Southeast Tech Housing.

Common Area Furnishings

- Kitchen Table & Chairs
- Full-Size Refrigerator
- Stove/Oven
- Dishwasher
- Pantry & Coat Closet
- Window Blinds
- Full-Size Couch
- Cable
- Wireless Internet
- Unit-Controlled Thermostat

Things to Consider Bringing

- Vacuum
- Cleaning Supplies
- Microwave
- Dishes & Silverware
- Pots & Pans
- Towels & Toiletries
- Shower Curtain
- Couch, Love Seat, Futon
- Television
- Entertainment Center
- Coffee Table
- End Tables
- Floor Lamps
- Wall Decorations*

Bedroom Furnishings

- Extra Long Twin Mattress
- Bed Frame With Adjustable Height
- 3-Drawer Dresser
- Built-in Desk & Shelving Unit
- Desk Chair
- Window Blinds
- Closet
- Door Lock

Things to Consider Bringing

- Bedding/Pillow
- Seasonal Clothing
- Laundry Bag(s)
- Slippers
- Dorm-Size Refrigerator
- Television
- Alarm Clock
- Radio/Stereo
- Storage Containers
- Desk Organizer
- Desk Lamp
- Floor Lamp
- Wall Decorations*

**Wall decorations should be limited to small pictures and/or posters that can be affixed using thumbtacks or small nails. To affix items to doors or closets, residents may use plasti-tac ONLY. Tape, large nails, hooks and/or contact paper are not permitted. Damages caused by the use of these items will be charged to the resident responsible for their use.*



SOUTHEAST
Technical College

WWW.SOUTHEASTTECH.EDU

Updated: August 12, 2020